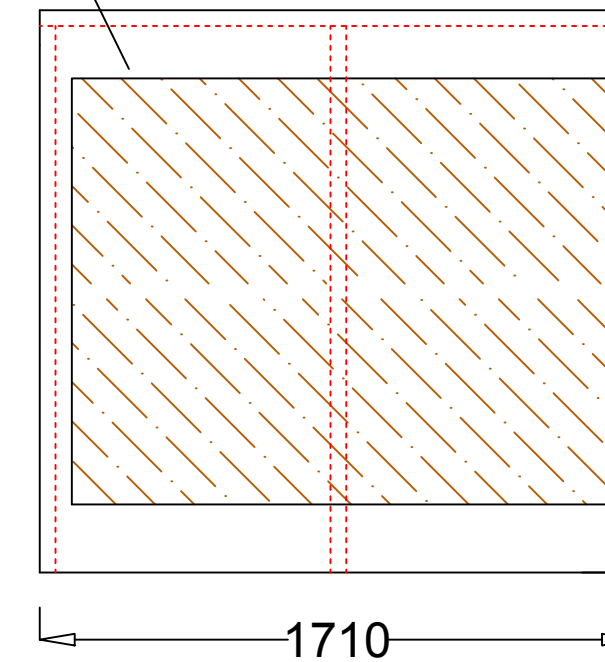
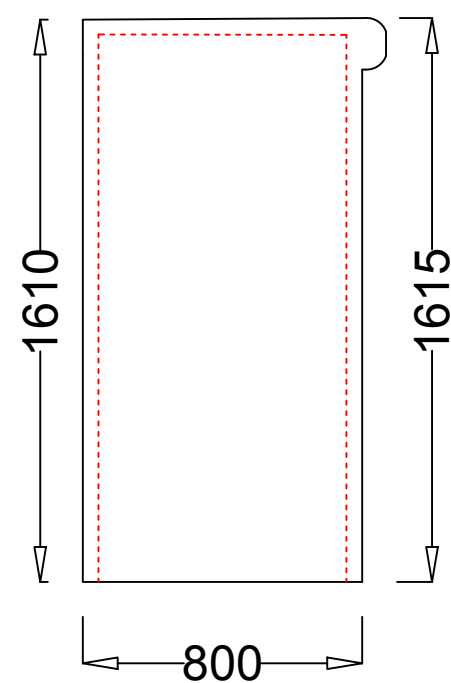


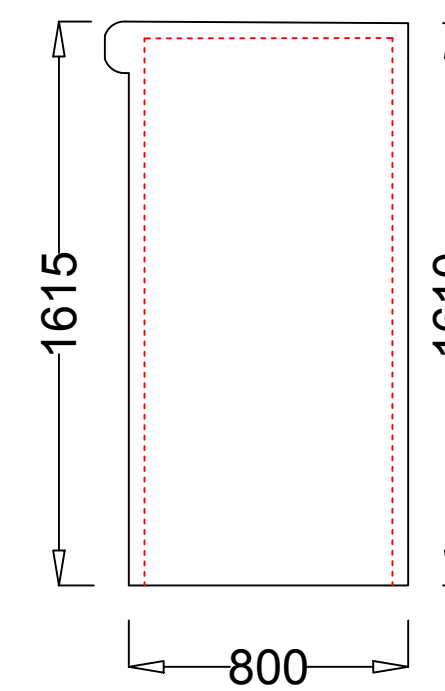
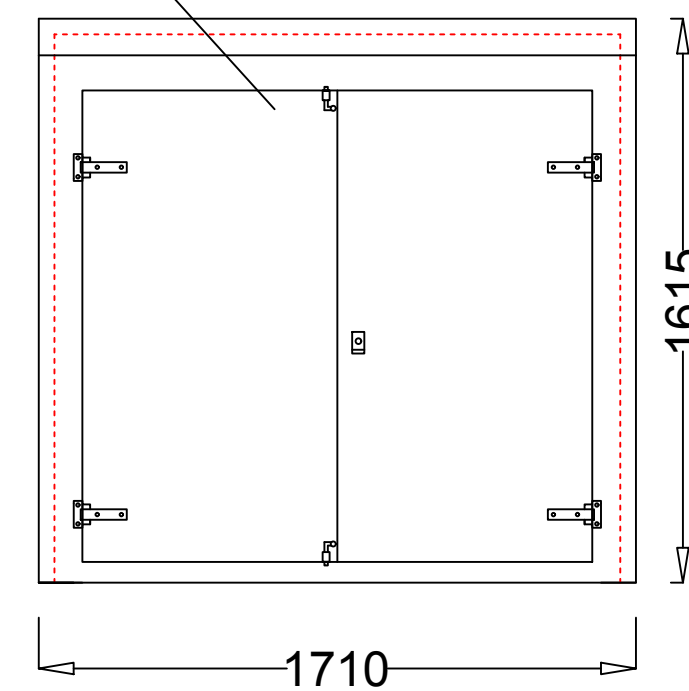
1530mm x 1220mm x 18mm Surface Treated Ply Backboard.



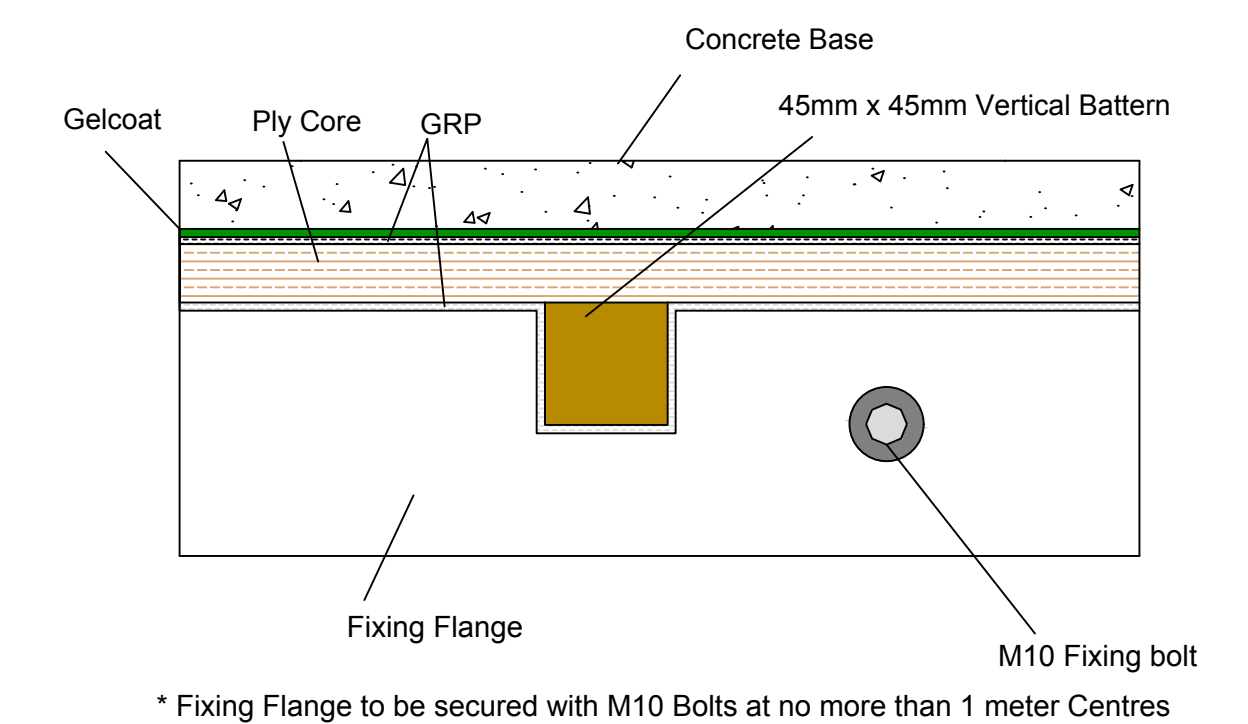
Clear Internal Dimensions - 1700mm x 660mm x 1600mm



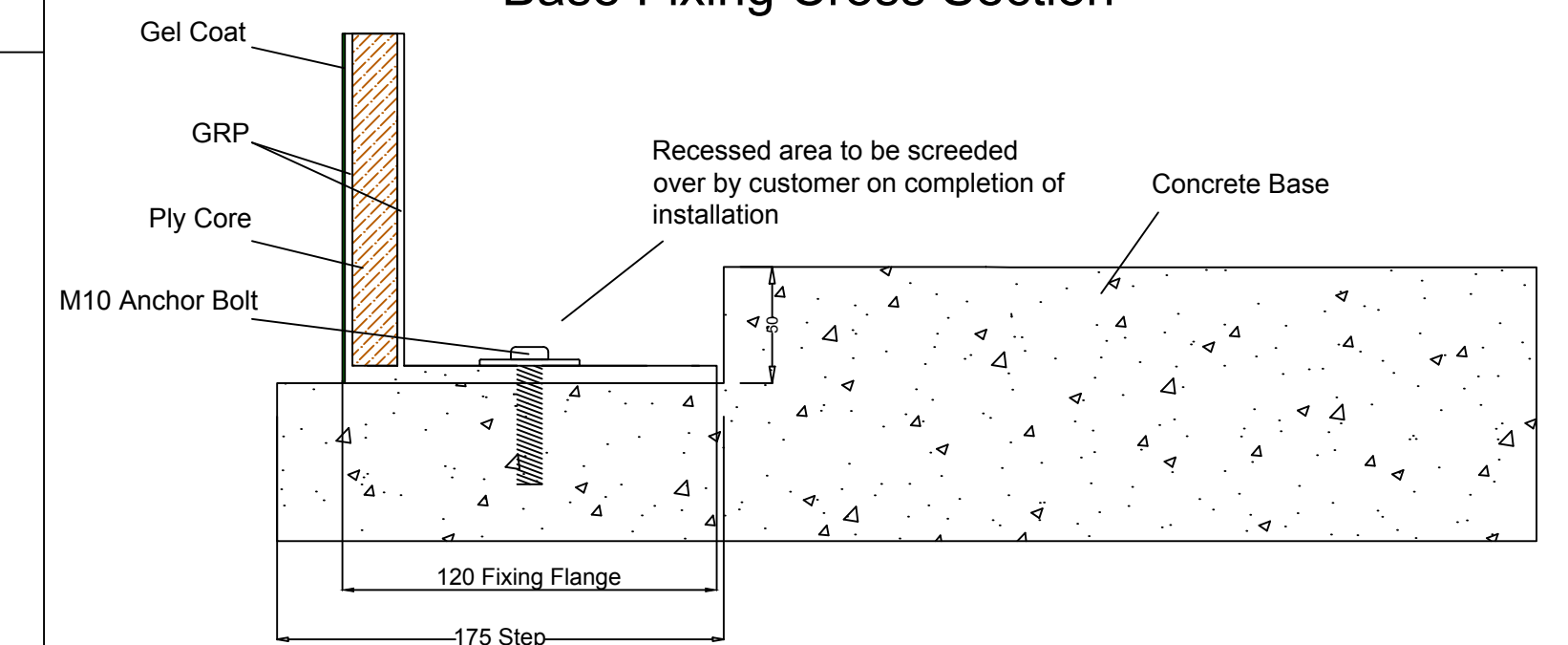
- 1No. Double door (1460 mm W x 1380mm H Clear Opening)
- 4No. St/St Hinges
- 1No. Yale type Lock
- 2No. Shoot Bolts
- 1No. Compression Seal



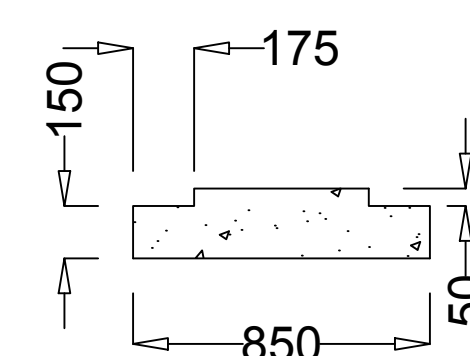
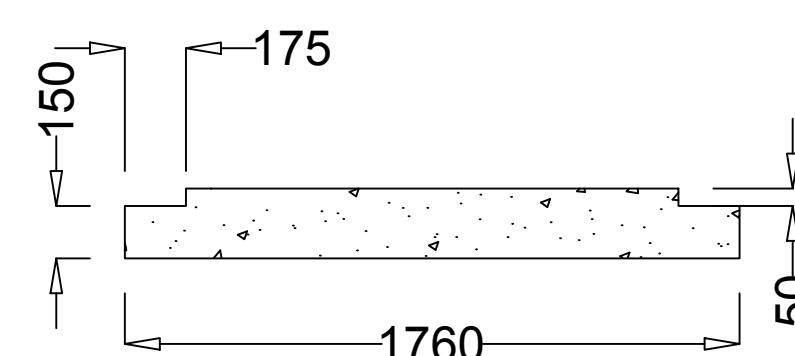
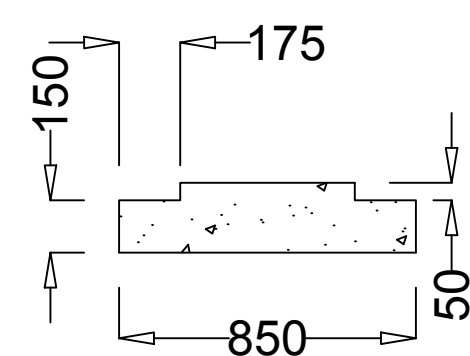
#### Recommended Base Fixing Detail Plan View



#### Base Fixing Cross Section



#### Recommended Stepped Base Detail



**Adept GRP Cabinets Ltd**

Tel: 01269 843355  
Email: Sales@adeptgrp.co.uk  
Unit 1, Burry Port Industrial Estate  
Llanelli, Carmarthenshire, SA16 0NN

Company: ADEPT GRP Cabinets Ltd

Contact: Daniel Phillips

Scheme Title: VR10

Drawn:Liam Brown

Date: 20.06.23

Checked:

External Colour - BS or RAL

Approx. Weight = 100KG

"U" Value = 3.0 W/sq.m/degC

Construction: Single skin

Drawing No. VR10